

seaco

40' & 62' ROLLTRAILERS

SPECIFICALLY DESIGNED FOR THE MOVEMENT OF PRODUCTS SUCH AS STEEL, PAPER, CABLES AND FOR HIGH-VALUE CARGO SUCH AS YACHTS AND CARS
BIG SOLID WHEELS WITH VULCANISED RUBBER TYRES GENERATE LOWER HEAT AND REDUCE ROLLING RESISTANCE, GIVING HIGHER-ROLLING SPEED, LONGER LIFE AND INCREASED DAMAGE RESISTANCE. TRUNDLE BEARINGS AND LOW-BUILT ROCKER ARMS HELP REDUCE MAINTENANCE COSTS



FEATURES

- 80-120 TONS PAYLOAD
- SOLID WHEELS WITH VULCANIZED RUBBER TYRES
- FULL LENGTH LASHING BARS AND REINFORCED STANCHION POCKETS
- 62' VERSION AVAILABLE WITH RAIL TRACKS
- LOW HEIGHT 730-850MM
- SOLID WOODEN DECKING
- MULTIPLE FIXING POINTS

ADVANTAGES

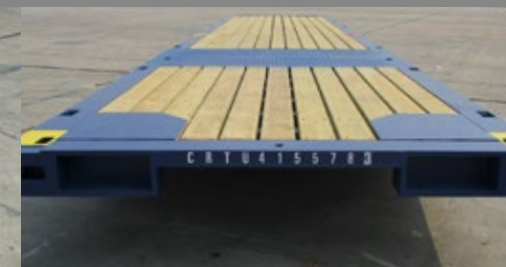
- SUITABLE FOR HEAVY DUTY CARGO; OPERATIONAL FLEXIBILITY
- REDUCES ROLLING RESISTANCE
- EASY AND FLEXIBLE APPLICATION OF LASHINGS
- PROVIDES TAILORED PLATFORM FOR WHEELED CARGO TO ROLL ON AND OFF
- REDUCES OVERALL HEIGHT OF LOAD;
- OPERATIONAL FLEXIBILITY AND ENHANCED EFFICIENCY
- PROVIDES REINFORCED PLATFORM FOR CARGO LOAD
- SUPPORTS ISO CONTAINER LOADING

BENEFITS

- SAVES OPERATIONAL COST;
- GENERATES REVENUE FROM CARRYING MULTIPLE CARGO
- REDUCES MAINTENANCE AND REPAIR COSTS
- SAVES TIME AND COST ON SECURING CARGO
- PREVENTS CARGO LOSS
- SAVES TIME AND COST ON LOADING CARGO
- SAVES MONEY; ADDITIONAL REVENUE FROM CARRYING MULTIPLE CARGO
- REDUCE POTENTIAL MAINTENANCE AND REPAIR COSTS
- INCREASES REVENUE



Rail tracks optional



GLOBAL EXPERTISE WITH LOCAL KNOWLEDGE

ANTWERP • BRISBANE • CAPE TOWN • GOTHENBURG • HAMBURG • HOUSTON • LISBON • LONDON • MADRID • MIAMI
 MOSCOW • MUMBAI • PARIS • PERTH • RIO DE JANEIRO • SEOUL • SHANGHAI • SINGAPORE • SYDNEY • TAIPEI • TOKYO

DRY FREIGHT SPECIALS: BULKERS, FLATRACKS, OPENTOPS, HALF HEIGHTS, ROLLTRAILERS, SEACELLS, SEAPC⁺, SLIMWALL CPC[®]S AND 2.5m PALLETWIDES

Length	SWL (Uniform Loading)	Platform Height	Ground Clearance	Wheel Dimensions	Track Rail	Track Rail Width
40'	80 tons	730 mm	268 mm	22" x 14" x 16"	Nil	Nil
	100 tons	730 mm	222 mm	22" x 14" x 16"	Nil	Nil
	120 tons	850 mm	288 mm	22" x 14" x 16"	Nil	Nil
62'	100 tons	850 mm	285 mm	22" x 14" x 16"	2 Rails	1,435 mm



SEACO HAS A DEDICATED TEAM OF WORLDWIDE SPECIALISTS WHO HAVE CONSTRUCTED ONE OF THE LARGEST LEASING FLEETS OF SPECIALISED CONTAINERS. WITH OUR VAST EXPERIENCE IN THE INDUSTRY, WE WILL FIND THE RIGHT PRODUCT FOR YOUR NEEDS AND TAILOR OUR LEASE AGREEMENTS TO YOUR SPECIFIC REQUIREMENTS.

FOR DETAILED SPECIFICATIONS OF OUR PRODUCT OFFERING, PLEASE CONTACT YOUR REGIONAL SEACO OFFICE:

AMERICAS

(+1) 281 377 3200 ext. 2131
cs.americas@seacoglobal.com

AFRICA

(+27) 2 1702 3631
cs.southafrica@seacoglobal.com
seacoglobal.co.za

EUROPE

(+49) 40 8080 3128
cs.emeia@seacoglobal.com

ASIA

(+65) 6595 1900
cs.asiapacific@seacoglobal.com

MIDDLE EAST & INDIA

(+91) 22 6179 0644
cs.isc@seacoglobal.com

OCEANIA

(+61) 2 9290 1455
cs.oceania@seacoglobal.com
seacoglobal.com.au



an **HNA** company