

seaco

CELLULAR PALLETWIDES (HIGH CUBE)

DESIGNED TO CARRY MORE PALLETS THAN CONVENTIONAL MARINE CONTAINERS

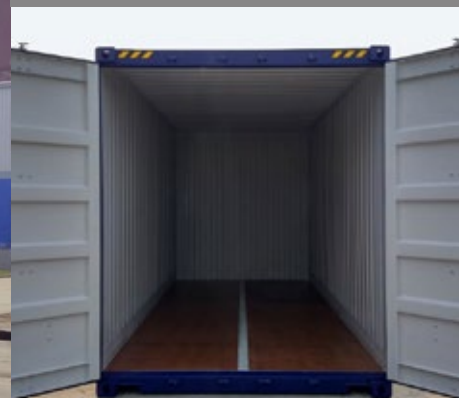
HANDLES EXACTLY LIKE A STANDARD ISO CONTAINER



**GLOBAL EXPERTISE
WITH LOCAL KNOWLEDGE**

KEY FEATURES

- FULLY INTERMODAL
- CORTEN STEEL CONSTRUCTION
- LARGER CUBIC CAPACITY
- MORE PAYLOAD



ANTWERP • BRISBANE • CAPE TOWN • DURBAN • GOTHENBURG • HAMBURG • HOUSTON • LISBON • LONDON • MADRID
 MIAMI • MOSCOW • MUMBAI • PARIS • PERTH • RIODEJANEIRO • SEOUL • SHANGHAI • SINGAPORE • SYDNEY • TAIPEI • TOKYO

**DRY FREIGHT SPECIALS: BULKERS, FLATRACKS,
 OPEN TOPS, HALF HEIGHTS, ROLLTRAILERS, SEACELLS,
 SEAPC⁺, SLIMWALL CPC[®]S AND 2.5m PALLETWIDES**

TECHNICAL SPECIFICATIONS	20ft (9 ft 6 ins)	40ft (9 ft 6 ins)
Maximum Gross Weight	30,480 kgs	34,000 kgs
Tare Weight	2,780 kgs	4,630 kgs
Payload	27,700 kgs	29,370 kgs
Internal Cubic Capacity	38.4m ³	79.0m ³
Internal Length	5,899mm	12,100mm
Internal Width	2,418mm	2,422mm
Internal Height	2,698mm	2,695mm
External Length	6,058mm	12,192mm
External Width	2,462mm	2,462mm
External Height	2,896mm	2,896mm

PALLET TYPE	PALLET CAPACITY	
Standard (1,000mm x 1,200mm)	10	24
Euro Pallet (800mm x 1,200mm)	14	30
Australian (1.165m ²)	10	20



SEACO HAS A DEDICATED TEAM OF WORLDWIDE SPECIALISTS WHO HAVE CONSTRUCTED ONE OF THE LARGEST LEASING FLEETS OF SPECIALISED CONTAINERS. WITH OUR VAST EXPERIENCE IN THE INDUSTRY, WE WILL FIND THE RIGHT PRODUCT FOR YOUR NEEDS AND TAILOR OUR LEASE AGREEMENTS TO YOUR SPECIFIC REQUIREMENTS.

FOR DETAILED SPECIFICATIONS OF OUR PRODUCT OFFERING, PLEASE CONTACT YOUR REGIONAL SEACO OFFICE:

ASIA

(+65) 6595 1900
 cs.asiapacific@seacoglobal.com

MIDDLE EAST & INDIA

(+91) 22 6179 0644
 cs.isc@seacoglobal.com

AMERICAS

(+1) 305 597 2135
 cs.americas@seacoglobal.com

AFRICA

(+27) 2 1702 3631
 cs.southafrica@seacoglobal.com
 seacoglobal.co.za

EUROPE

(+49) 40 8080 3128
 cs.emeia@seacoglobal.com

OCEANIA

(+61) 2 9290 1455
 cs.oceania@seacoglobal.com
 seacoglobal.com.au



an **HNA** company